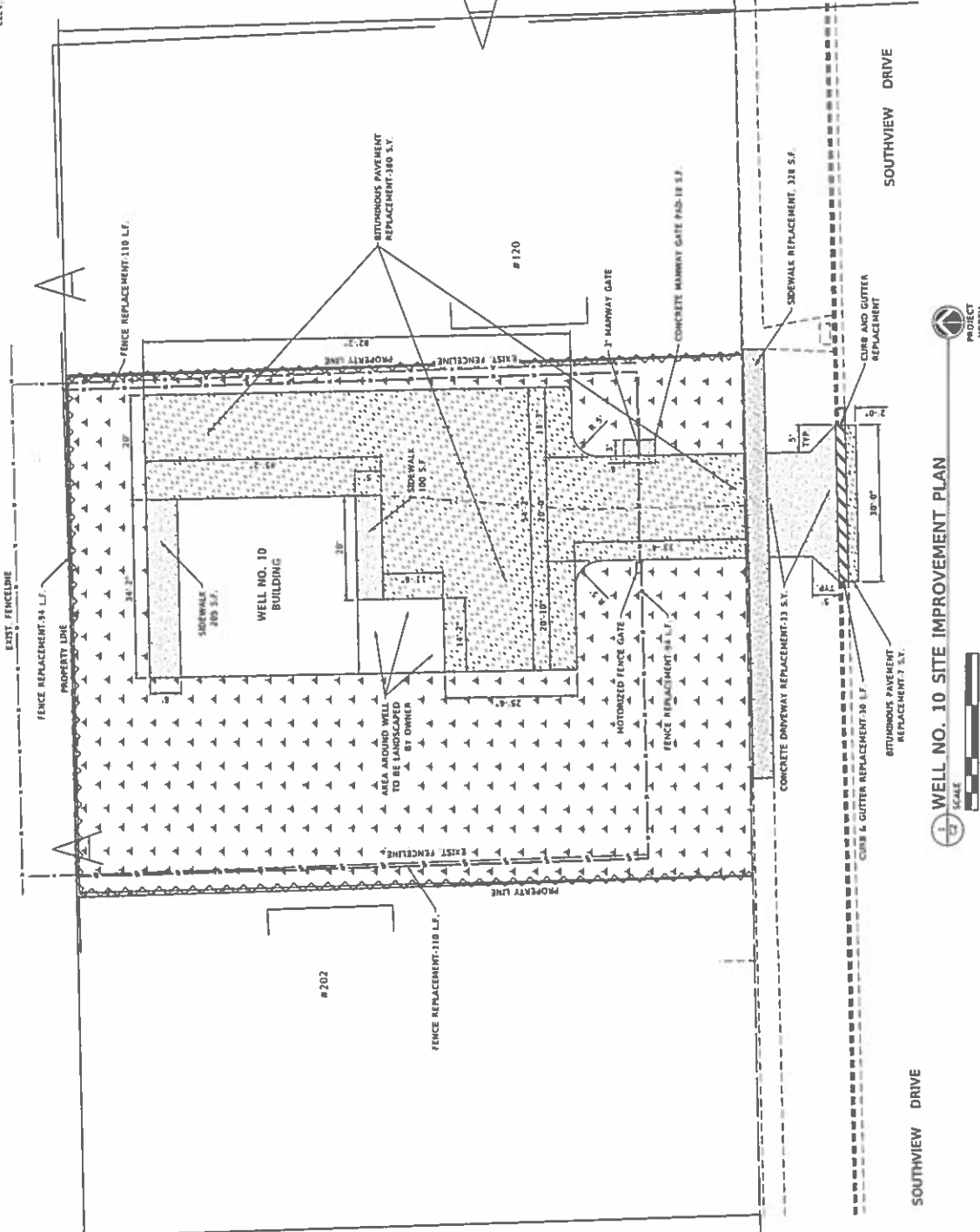


BENCHMARK #401: BR 5PK IN LP AT SE COR.
SOUTHVIEW DR. & LAELAND DR.
ELEV. 791.64



CLASS 1 SEEDING	
BITUMINOUS PAVEMENT	643 S.Y.
CONCRETE DRIVEWAY / SIDEWALK/PAD	387 S.Y.
CURB & GUTTER	33 S.Y.
	651 S.P.
	38 L.F.
	408 L.F.
	1 EACH
	1 EACH

LEGEND	
CLASS 1 SEEDING	643 S.Y.
BITUMINOUS PAVEMENT	387 S.Y.
CONCRETE DRIVEWAY	33 S.Y.
CONCRETE SIDEWALK/PAD	651 S.P.
CURB & GUTTER	38 L.F.
FENCE	408 L.F.
MOTORIZED FENCE GATE	1 EACH
DRIVEWAY GATE	1 EACH

FILE No.	127707	SHEET No.	C2
DATE	3-7-18		

CONTRACT NO. 1
WELL NO. 10 BUILDING REPLACEMENT
SITE IMPROVEMENTS PLAN

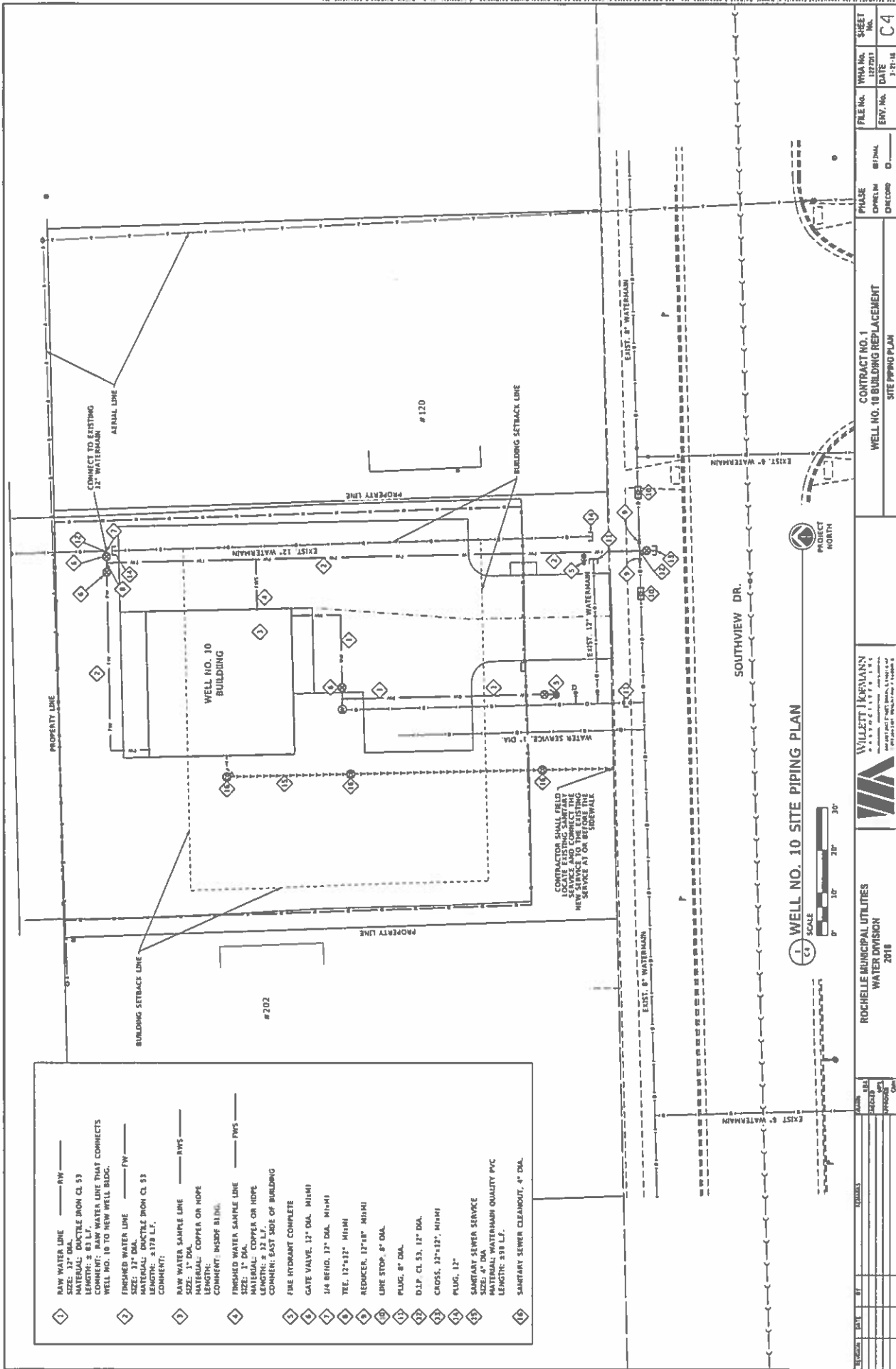
ROCHELLE MUNICIPAL UTILITIES
WATER DIVISION
2018



WELLET KOFMANN
ENGINEERS & ARCHITECTS, INC.
1000 W. 10th Street, Suite 100
Lawrence, KS 66044

PROJECT MONTH

NO.	DATE	BY	DESCRIPTION



- 1 RAW WATER LINE — RW —
SIZE: 12" DIA. DUCTILE IRON CL 53
LENGTH: 831 L.F.
COMMENT: RAW WATER LINE THAT CONNECTS WELL NO. 10 TO NEW WELL BLDG.
- 2 FINISHED WATER LINE — FW —
SIZE: 12" DIA.
MATERIAL: DUCTILE IRON CL 53
LENGTH: 8178 L.F.
COMMENT:
- 3 RAW WATER SAMPLE LINE — RWS —
SIZE: 1" DIA.
MATERIAL: COPPER OR HOPE
LENGTH: INSIDE BLDG.
COMMENT: INSIDE BLDG.
- 4 FINISHED WATER SAMPLE LINE — FWS —
SIZE: 1" DIA.
MATERIAL: COPPER OR HOPE
LENGTH: 831 L.F.
COMMENT: EAST SIDE OF BUILDING
- 5 FIRE HYDRANT COMPLETE
- 6 GATE VALVE, 12" DIA. M/H/M
- 7 1/4 BEND, 12" DIA. M/H/M
- 8 TEE, 12"x12" M/H/M
- 9 REDUCER, 12"x8" M/H/M
- 10 LINE STOP, 8" DIA.
- 11 PLUG, 8" DIA.
- 12 O.L.P. CL 53, 12" DIA.
- 13 CROSS, 12"x12" M/H/M
- 14 PLUG, 12"
- 15 SANITARY SEWER SERVICE
SIZE: 4" DIA
MATERIAL: WATERMAIN QUALITY PVC
LENGTH: 398 L.F.
- 16 SANITARY SEWER CLEANOUT, 4" DIA.

1 WELL NO. 10 SITE PIPING PLAN



REVISION	DATE	BY	REMARKS

ROCHELLE MUNICIPAL UTILITIES
WATER DIVISION
2018

WILLETT KOPMANN
ASSOCIATES, LLC
1000 W. 10th St., Suite 100
Rochelle, IL 61068
TEL: 815.281.7100 FAX: 815.281.7101

CONTRACT NO. 1
WELL NO. 10 BUILDING REPLACEMENT
SITE PIPING PLAN

PHASE
CIVIL
DRAINAGE

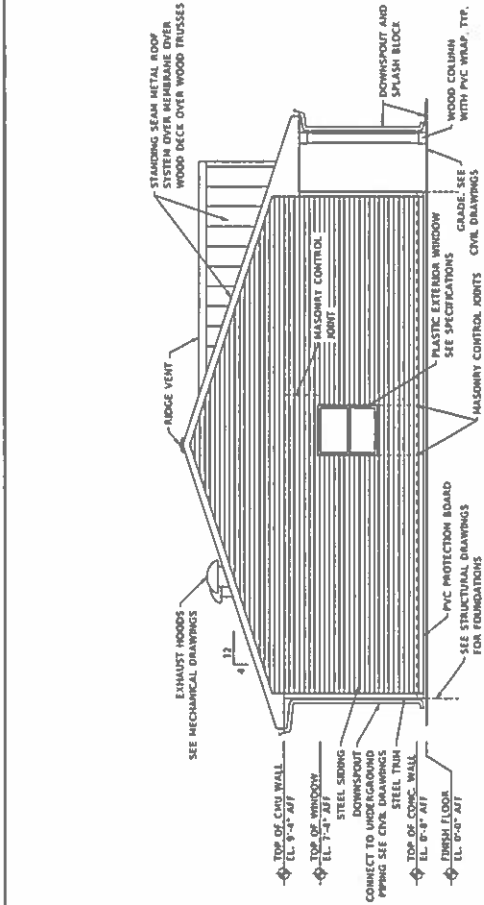
FILE NO.
127201

ENV. No.
D

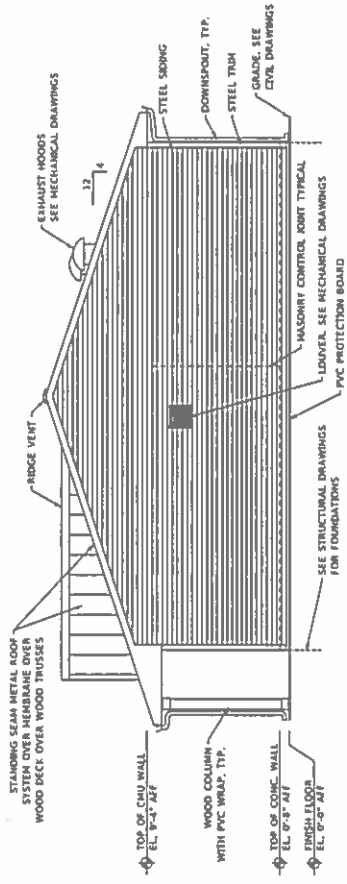
WMA No.
127201

SHEET No.
C4

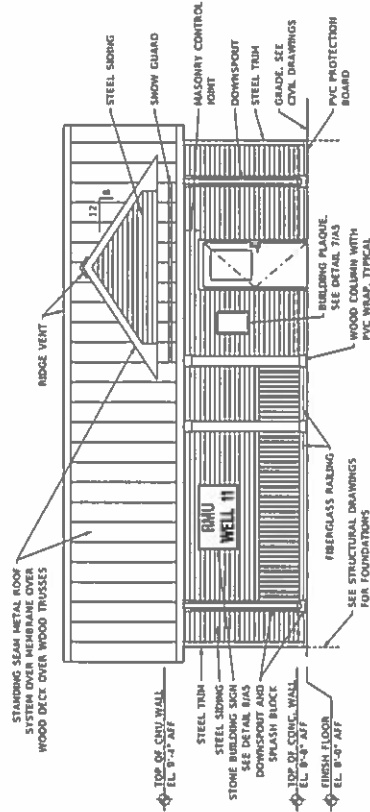
DATE
3/21/18



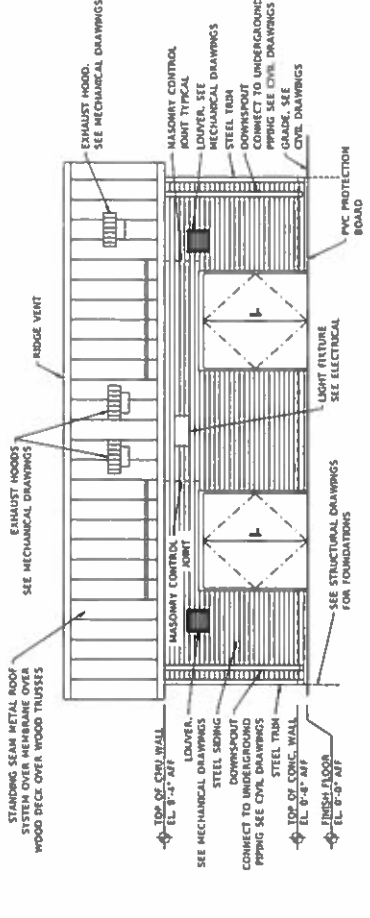
WEST ELEVATION



EAST ELEVATION



SOUTH ELEVATION



NORTH ELEVATION



REVISION	DATE	BY	REMARKS	PHASE	DRAWING	DATE	1-21-18

WILLETTS KOFMANN
 ARCHITECTS, INC.
 1055 AVENUE G
 SUITE 100
 ROCKELLE, MISSISSIPPI 38867
 TEL: 662-335-1234 FAX: 662-335-1235

ROCHELLE MUNICIPAL UTILITIES
 WATER DIVISION
 2011

CONTRACT NO. 1
WELL NO. 10 BUILDING REPLACEMENT
 BUILDING ELEVATIONS

FILE NO. 227207
 SHEET NO. **A3**