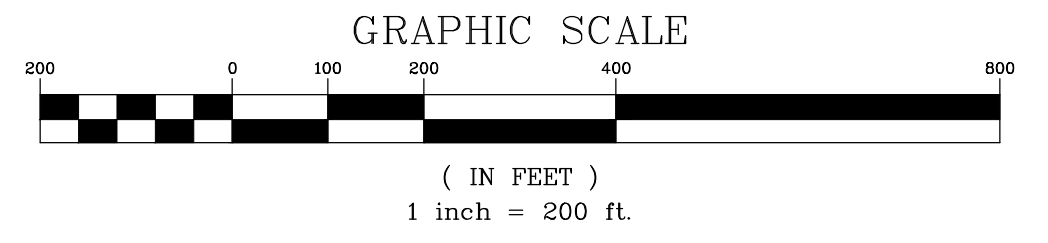


# FINAL PLAT OF PILOT/FLYING J TRUCK CENTER SUBDIVISION

**OWNER/DEVELOPER**

PILOT/FLYING J TRUCK CENTERS  
5508 LONAS DRIVE  
KNOXVILLE TN, 37909



**AREA SUMMARY**

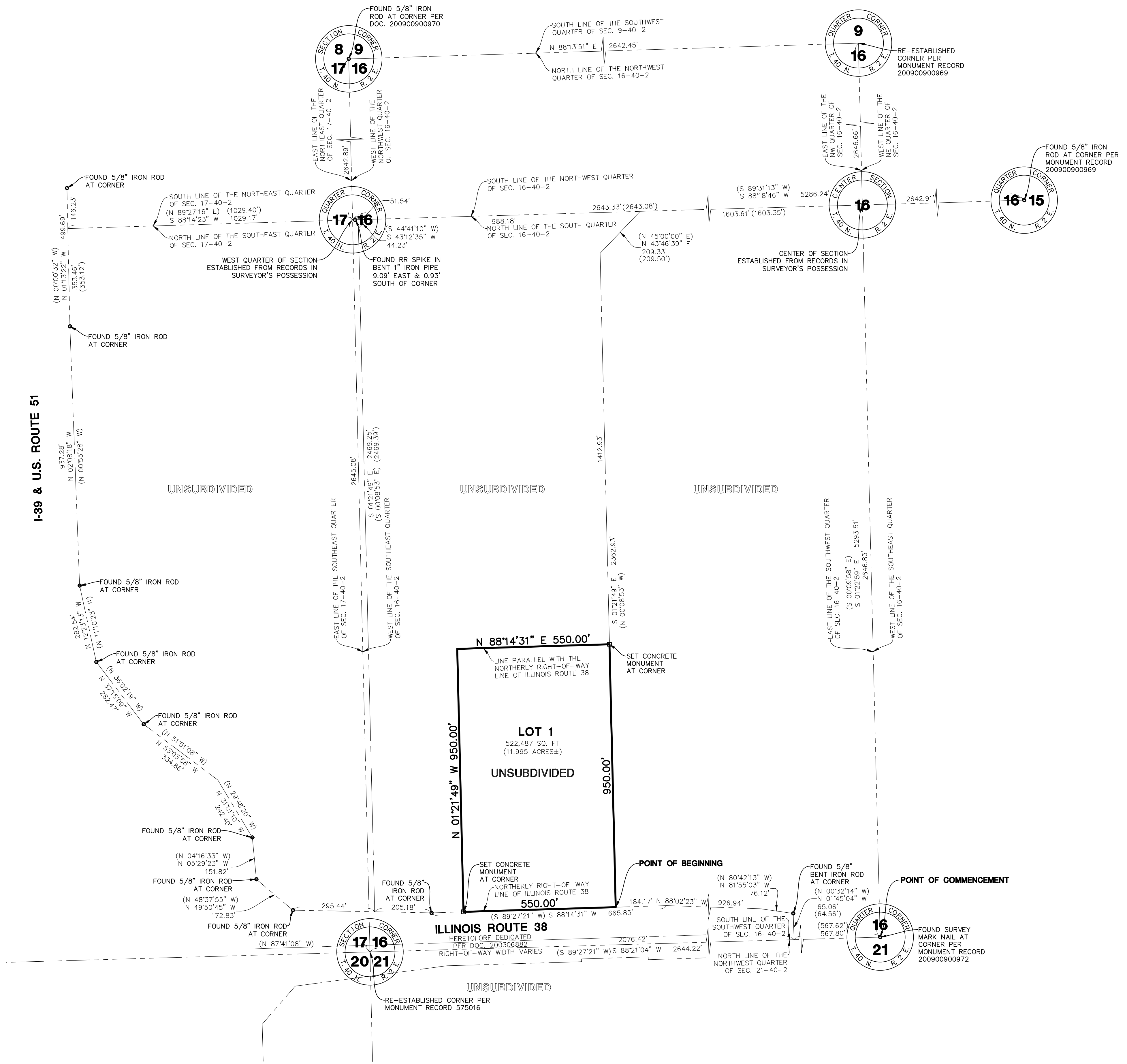
LOT 1: 522,487 SQUARE FEET (11.995 ACRES)

**BASIS OF BEARINGS**

COORDINATES AND BEARINGS ARE BASED UPON THE ILLINOIS STATE PLANE COORDINATE SYSTEM, WEST ZONE (NAD 83), ADJUSTED TO GROUND VALUES, AS ESTABLISHED BY A REAL-TIME KINEMATIC (RTK) GLOBAL NAVIGATION SATELLITE SYSTEM (GNSS) UTILIZING THE TRIMBLE VRS NOW NETWORK.

**PIN'S**

25-16-300-003



**GENERAL NOTES**

1. DISTANCES ARE MARKED IN FEET AND DECIMAL PLACES THEREOF.
2. NO DIMENSION SHALL BE ASSUMED BY SCALE MEASUREMENT HEREON.
3. THERE MAY BE ADDITIONAL TERMS, POWERS, PROVISIONS AND LIMITATIONS CONTAINED IN AN ABSTRACT DEED, LOCAL ORDINANCES, DEEDS, TRUSTS, COVENANTS OR OTHER INSTRUMENTS OF RECORD.
4. COMPARE ALL POINTS BEFORE BUILDING BY SAME AND IMMEDIATELY REPORT ANY DISCREPANCIES TO THE SURVEYOR.
5. DIMENSIONS ALONG CURVED LINES ARE ARC LENGTHS.
6. □ DENOTES CONCRETE MONUMENTS.
7. IN ACCORDANCE WITH CHAPTER 765 ILCs SECTION 205/1 5/8"X 34" LONG IRON RODS WILL BE SET AT ALL PROPERTY CORNERS AND POINTS OF GEOMETRIC CHANGE UNLESS NOTED OTHERWISE.

**SHEET INDEX**

SHEET 1 OF 2:	OVERALL BOUNDARY, NOTES, AND LABELS.
SHEET 2 OF 2:	LEGAL DESCRIPTION, PROVISION LANGUAGE AND CERTIFICATES.

**LEGEND**

- EX. PROPERTY LINE
- - - EX. SECTION LINE
- (0.00) = RECORD DIMENSION
- 0.00 = LOT DIMENSION
- 0.00 = BOUNDARY DIMENSION
- = FOUND IRON PIPE OR ROD

DATE	REVISIONS	DRAWN BY

